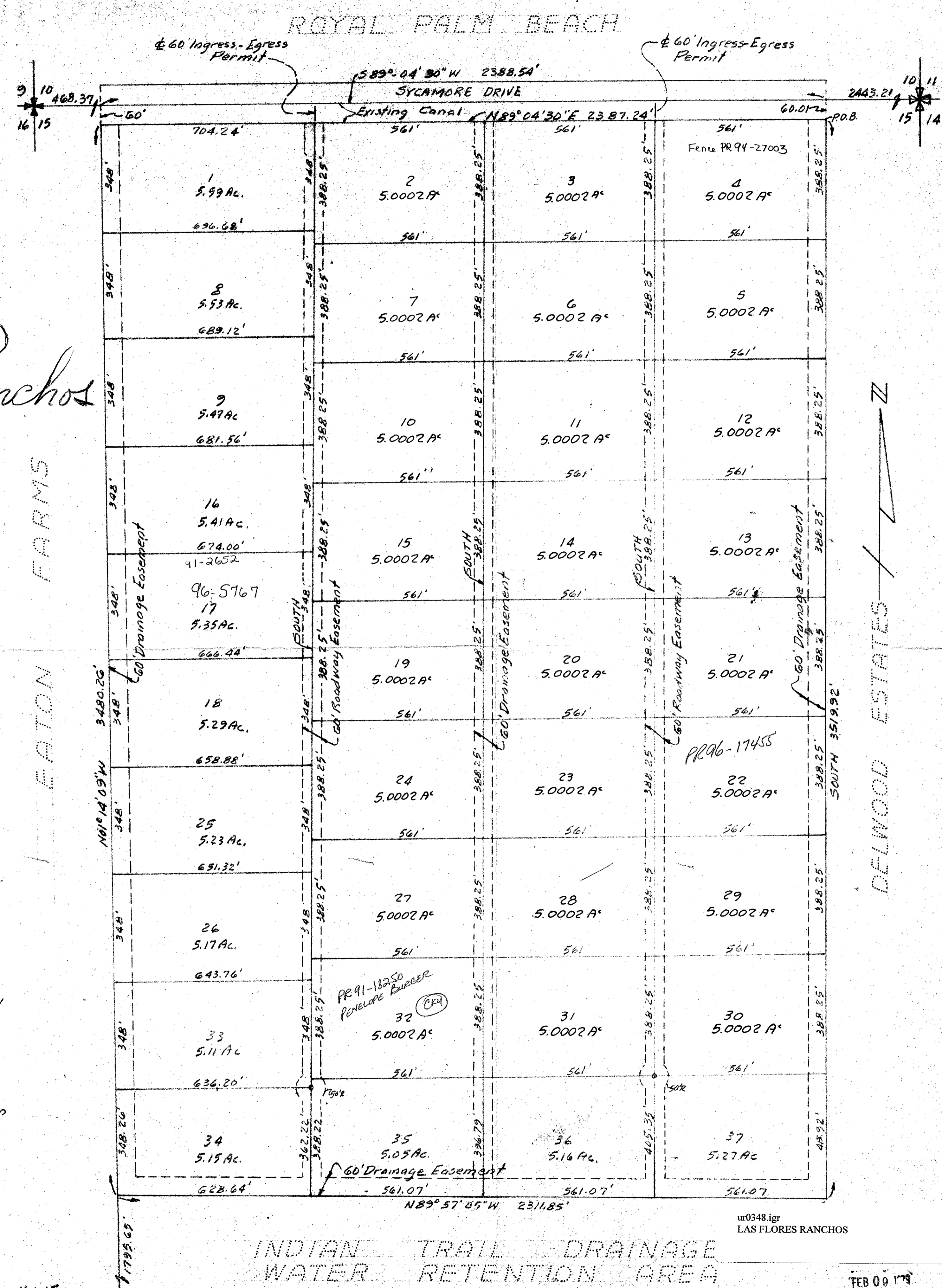


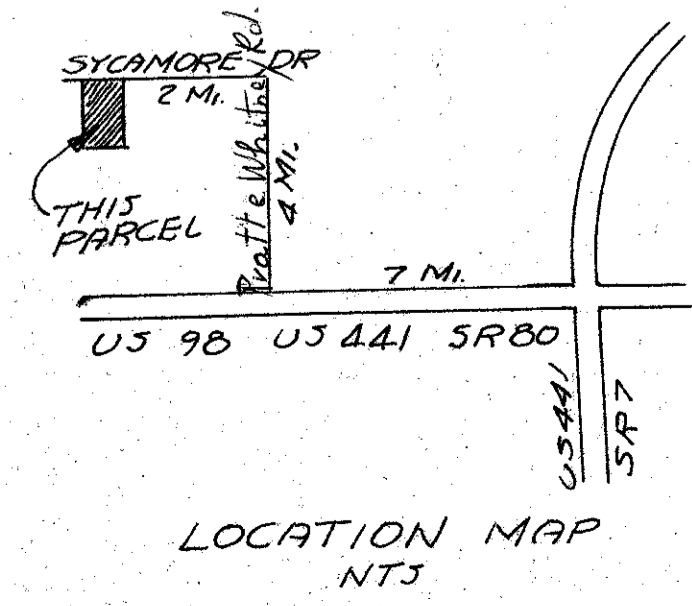
# Las Flores Ranchos

EATON FARMS

DELWOOD ESTATES



Commencing at the Northeast corner of Section 15, Township 43 South, Range 40 East, Palm Beach County, Florida; thence  $589^{\circ}04'30''$ W, along the North Line of said Section, a distance of 2443.21 feet to a point; thence run South a distance of 60.01 feet to the Point of Beginning.  
 From the Point of Beginning, continue South, a distance of 3519.92 feet to a point; thence run  $N89^{\circ}57'05''$ W, a distance of 2311.85 feet to a point; thence run  $N1^{\circ}14'09''$ W, a distance of 3480.26 feet to a point 600 feet south of the North Line of Section 15; thence run  $N89^{\circ}04'30''$ E, a distance of 2387.24 feet to the Point of Beginning.  
 Containing 188.77 Acres



BOUNDARY SURVEY BY  
 JOHN VAN NORMAN  
 REG. LAND SURVEYOR N° 1557

INDIAN TRAIL DRAINAGE  
 WATER RETENTION AREA

Note:  
 Survey Information by  
 Malek & Associates.

CONSULTING ENGINEERS  
 LAND SURVEYORS  
 BOCA RATON - FLORIDA  
**WALTER A. CORNELL, INC.**  
 PLAT LAYOUT  
 LAS FLORES RANCHOS  
 Scale 1"=200'  
 CHECKED  
 DRAWN J.P.V.  
 DATE 8 Jan 79  
 JOB 76-30-60  
 Rev 3 Feb 79 MAC